

The Chromebook built for schools  
and designed for learning

## THE HP Chromebook 11 G8 Education Edition

Help students reach their potential with cloud-first<sup>13</sup> learning on the durable HP Chromebook 11 G8 EE that keeps pace with active student lifestyles while the fast-booting Chrome OS makes IT management easy.





**A Chromebook built to withstand students and school**

**days**  
Give students a Chromebook that can survive a fall off a desk<sup>8</sup>, a splash from a soda<sup>8</sup> or a tugged power cord.

**BUILT FOR SCHOOL**



**ENHANCED DURABILITY**

- 120,000 hrs of rigorous testing<sup>8</sup>
- 122 cm drop on plywood<sup>8</sup>
- 76 cm drop on concrete<sup>8</sup>
- 200 tumble cycles<sup>8</sup>

**SPILL-<sup>8</sup> AND PICK-RESISTANT Keyboard**

HP improved anchored keyboard design  
Minor spill-resistant keyboard<sup>8</sup>

**REINFORCED USB-C™<sup>8</sup>**

Reinforced USB-C™ power port<sup>8</sup> withstands daily stress and strain over the lifetime of the product, minimizing service cost



## Classroom-ready performance

Quickly stream and access textbooks, tests, and more with Intel® processors<sup>5</sup> and the Chrome OS™. Work continuously with long battery life<sup>2</sup> and fast recharging<sup>7</sup>.

# CLASSROOM-READY



### School-Day Performance

Latest Intel® Celeron® processors<sup>5</sup>  
Up to 8GB memory  
Up to 64GB storage<sup>9</sup>

### ALL DAY BATTERY

Long battery life up to 13.5 hours<sup>2</sup> with HP Fast Charge<sup>7</sup> - 90% in 90 minute<sup>7</sup>  
Long life battery

### HP CLASSROOM MANAGER<sup>4</sup>

Make it easier for teachers to manage student activities and collaborate effectively



Show and share in class

Show and share apps on a lie-flat device with an optional touchscreen<sup>3</sup>. Bring distance learning closer and collaborate remotely.

# ENGAGING



## 180° HINGE DESIGN

For small-group discussion in lay-flat mode with screen visible from multiple angles

## OPTIONAL IPS TOUCHSCREEN<sup>3</sup>

For intuitive interaction with the learning materials on screen

## STABLE CONNECTION

Stable data transfer in dense classroom environments by having 2x2 WLAN<sup>6</sup> with MU-MIMO<sup>15</sup> and HP Extended Range WLAN<sup>14</sup>



# HP Chromebook 11 G8 EE

## PRODUCT WALKTHROUGH



Large rubber bumper on edges and corners to help absorb shock from 76cm drop on concrete<sup>8</sup> and 122cm drop on plywood<sup>8</sup>

Keyboard that can be repeatedly wiped down with common household cleaning wipes<sup>8</sup>

HP Fast Charge<sup>7</sup>  
Up to 90% within 90 mins<sup>7</sup>

Power for learning  
Intel® Celeron® processors<sup>5</sup> with up to 8GB memory and 64GB storage<sup>9</sup>

180 Degree Hinge Design

Designed to pass HP Education SVTP<sup>8</sup> and MIL-STD<sup>1</sup>





# HP Chromebook 11 G8 EE

## PRODUCT WALKTHROUGH



**Slim design**

Z-Height:  
18.85 mm

**Stay connected**  
Intel® 2x2 AC<sup>6</sup> WLAN,  
MU-MIMO<sup>15</sup> supported  
HP Extended Range Wireless LAN<sup>14</sup> supported



**Spill-<sup>8</sup> and Pick-resistant keyboard**  
Resistant up to 350ml<sup>8</sup>  
HP Improved Anchored Key Design



**Enhanced USB-C™ ports<sup>8</sup> stand against larger pulling force with additional bracket to hold on to**

**Battery life beyond school day<sup>2</sup>**  
Up to 13.5 hrs battery life<sup>2</sup>





# HP Chromebook 11 G8 EE

## PRODUCT WALKTHROUGH



MicroSD™ memory card reader

USB 3.1 Type-C™ Gen 1  
support charging, power delivery, video, data

USB 3.1 Type-A™ Gen 1



Stereo Headphone /  
Microphone Combo Jack

USB 3.1 Type-A™ Gen 1

Nano Security  
Lock Slot



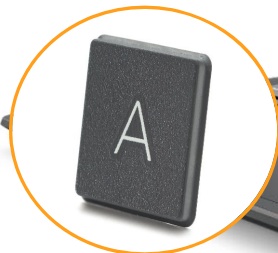
## HP CHROMEBOOK 11 G8 EE

## ADDITIONAL TESTING

**Wipeable keyboard**  
Tested to 1,000 wipes  
with a disinfectant cloth<sup>8</sup>



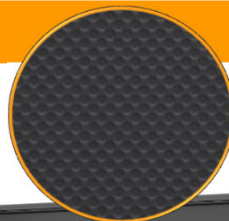
**Anchored Keys**  
Anchored skirt design  
helps resist picking



**Co-molded rubber  
trim around edges**  
Absorbs shock from  
accidental drops and  
bumps



**Textured Surface**  
Easy to grip and  
resists scratches



**Reinforced Hinge**  
For flexibility and  
damage protection



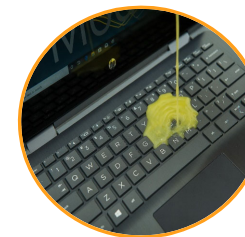
**Drop Test<sup>8</sup>**  
Tested to 76cm (30")  
onto concrete or steel<sup>8</sup>  
and 122cm (48") onto  
plywood<sup>8</sup> to mimic a  
drop from desk height




**Tumble Tests<sup>8</sup>**  
200 tumble cycles<sup>8</sup>



**Spill Tests<sup>8</sup>**  
Survives minor spills  
up to 350ml of water  
(almost 12 oz.)<sup>8</sup>



Photos are for illustrative purposes only and do not depict actual testing 

© Copyright 2019 HP Development Company, L.P. The information contained herein is subject to change without notice.





# HP Chromebook 11 G8 EE

## Durability Enhancement



Additional bezel brackets to support the pressure and prevent bending<sup>8</sup> while in a backpack



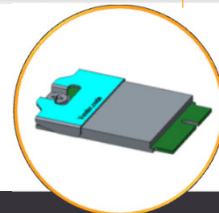
Added bracket on the panel cable connector to ensure it doesn't come loose<sup>8</sup>



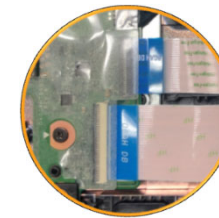
Reinforced USB-C<sup>™</sup> ports<sup>8</sup> stand against larger pulling force with additional stronger SUS bracket to hold on to it



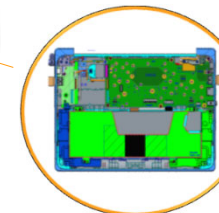
Corners reinforced with sheet metal to support higher drop<sup>8</sup>



Added bracket on WLAN<sup>6</sup> card to ensure they don't come loose<sup>8</sup>



Adding tape for all the connectors to ensure the connectors don't come loose<sup>8</sup>



Additional battery plate to prevent it from being pierced<sup>8</sup>



## BUILT FOR SCHOOLS, DESIGNED FOR LEARNING

*Help students  
reach their  
potential on the  
durable HP  
machine that  
keeps pace with  
active student  
lifestyles*

# WHAT'S NEW?

### Latest Intel® Celeron® N4020 & N4120 processors<sup>5</sup>

- Improved productivity up to 7% by the latest Intel® processors<sup>5</sup>.

### Enhanced durable design for daily activities

- Larger rubber bumper on edges and corners, Increased drop height to 76cm drop on concrete<sup>8</sup> and 122cm drop on plywood<sup>8</sup>, and enhanced USB-C™ connectors to stand against daily uses of plug and unplug.

### HP Improved Anchored Key Design

- HP Improved Anchored Key Design keyboard to make it harder to pick the keys up.

### Intel® 2x2 AC<sup>6</sup> WLAN with MU-MIMO<sup>15</sup> & Extended Range Wireless Lan<sup>14</sup>

- Easy connection in dense classroom environment and provides a longer connection range and stable data-throughput at shorter ranges

### Easy to Clean

- Keyboard that can be repeatedly wiped down with common household cleaning wipes.

### Unique textured surface

- Easy for small hands to grip and handle with Unique textured surface



# HP Chromebook 11 G8 Education Edition

World's thinnest 11" rugged Chromebook for education<sup>16</sup>

## Key Benefits

### Rugged and Learning-ready without the bulk

At **less than 19mm** thick, HP Chromebook 11 G8 EE is designed with enhanced durability via **larger rubber bumper on edges and corners**, targeting to pass **76cm drop on concrete test<sup>8</sup>** and **122cm drop on plywood<sup>8</sup>** and **MIL-STD 810G<sup>1</sup>** testing along with **spill-resistant keyboard<sup>8</sup>** and **HP Improved Anchored Key Design**, which offers durable mobility in school and at home.

### School-day performance

Powered by Intel **latest Intel<sup>®</sup> Celeron<sup>®</sup> processor<sup>5</sup>** with memory up to 8GB & storage up to 64GB<sup>9</sup> offers quick app launching, fast web browsing and battery life up to **13.5 hours<sup>2</sup>**. Spend less time charging and more time learning with **HP fast charge<sup>7</sup>** technology. Stable data transfer in dense classroom environments by having **2x2 WLAN<sup>6</sup>** with **MU-MIMO<sup>15</sup>** and **HP Extended Range Wireless Lan<sup>14</sup>**

### Interactive and collaborative learning

Optional **HD Anti-Glare IPS touch screen<sup>3</sup>** plus **180°** design to adjust the screen flat enables efficient and collaborative group discussion.



#### Rugged

Designed to pass MIL STD 810G<sup>1</sup> & 76cm drop on concrete and 122cm drop on plywood<sup>8</sup>



#### Intel Celeron<sup>®</sup> Processor<sup>5</sup>

Intel Celeron<sup>®</sup> DC & QC CPU<sup>5</sup>



#### All School Day Battery

**with Fast Charge<sup>7</sup>**  
Up to 13.5 hours<sup>2</sup>  
HP Fast charge<sup>7</sup>



#### Future Proof Port

USB-C<sup>™</sup> support  
charging, power  
delivery, video,  
data



#### Android Play Store Support

Android apps on  
Chrome OS<sup>13</sup>



#### Reliable Connectivity

2x2 AC<sup>6</sup> with MU-MIMO<sup>15</sup>  
Extended Range WLAN<sup>14</sup>

## Key Accessories



HP Always On Case



HP USB-C<sup>™</sup> adapters



HP USB-C<sup>™</sup> Travel Dock G2



HP USB-C<sup>™</sup>/A<sup>™</sup> Universal Dock G2

## Key Software

- Chrome OS
- HP Classroom Manager<sup>4</sup>

## Key Services

- HP Care Pack<sup>11</sup>
- Asset Tagging Services<sup>10</sup>
- Chrome Education Upgrade Enrollment<sup>10</sup>





# HP Chromebook 11 G8 EE

## HP Classroom Manager Software<sup>4</sup>

Classroom control, management, and collaboration with easy-to-use education software

HP P/N: V1E72AA

### Teachers use it to:

#### Evaluate comprehension

- Administer quizzes and tests
- Track keywords
- Record results and progress



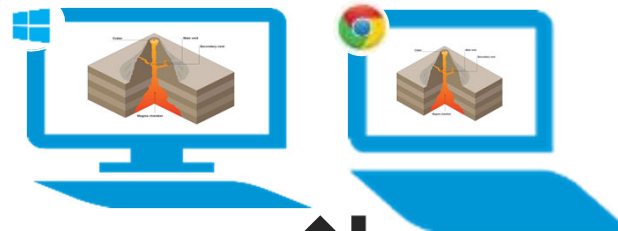
#### Encourage collaboration

- Distribute and collect assignments
- Form chat groups on topics
- Interact via virtual whiteboard

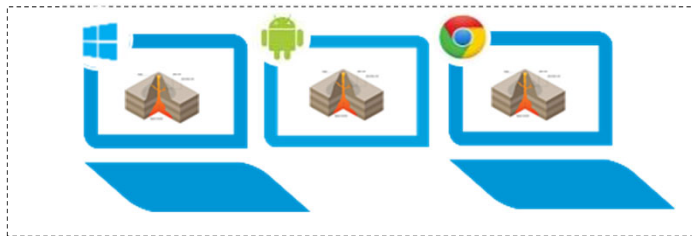
#### Direct student attention

- Website and app restriction
- Single click launch of websites and apps
- Screen and device locking

Teacher



Students



### IT admins use it to:

#### Monitor and access devices

- Monitor activity and usage
- Deploy and update software
- Security, firewall, and anti-virus
- PC inventory and registry editing

#### Easily support teachers

- Message teachers 1:1 or en masse
- Provide support to teachers



# FOOTNOTES

1. MIL STD 810G testing is pending and not intended to demonstrate fitness for U.S. Department of Defense contract requirements or for military use. Test results are not a guarantee of future performance under these test conditions. Any accidental damage requires an optional HP Accidental Damage Protection Care Pack
2. Testing conducted by HP using Google Chrome OS power\_LoadTest. Battery life will vary and the maximum capacity of the battery will naturally decrease with time and usage. See <http://www.chromium.org/chromium-os/testing/power-testing> for test details. Full charge battery life will decrease after Adaptive Battery Optimizer activation.
3. Sold separately or as an optional feature.
4. HP Classroom Manager is sold separately. Control and device locking from the teacher's desktop requires purchase of HP Classroom Manager.
5. Multi-Core processor is designed to improve performance of certain software products. Not all customers or software applications will necessarily benefit from use of this technology. Performance and clock frequency will vary depending on application workload and your hardware and software configurations. Intel's numbering, branding and/or naming is not a measurement of higher performance.
6. Wireless access point and internet service required. Availability of public wireless access points limited.
7. Recharges your battery up to 90% within 90 minutes when the system is off (using "shut down" command). Recommended for use with the HP adapter provided with the notebook, not recommended with a smaller capacity battery charger. After charging has reached 90% capacity, charging speed will return to normal speed. Charging time may vary +/-10% due to System tolerance.
8. Test results are not a guarantee of future performance under these test conditions. Accidental damage requires an optional HP Accidental Damage Protection Care Pack.
9. For storage drives, GB = 1 billion bytes. Actual formatted capacity is less. Up to 8.1 GB is reserved for system recovery software.
10. HP services are optional and are governed by the applicable HP terms and conditions of service provided or indicated to Customer at the time of purchase. Customer may have additional statutory rights according to applicable local laws, and such rights are not in any way affected by the HP terms and conditions of service or the HP Limited Warranty provided with your HP Product.
11. HP Care Packs are optional. Service levels and response times for HP Care Packs may vary depending on your geographic location. Service starts on date of hardware purchase. Restrictions and limitations apply. For details, visit [www.hp.com/go/cpc](http://www.hp.com/go/cpc). HP services are governed by the applicable HP terms and conditions of service provided or indicated to Customer at the time of purchase. Customer may have additional statutory rights according to applicable local laws, and such rights are not in any way affected by the HP terms and conditions of service or the HP Limited Warranty provided with your HP Product.
12. Placeholder for World's thinnest 11" rugged Chromebook for education
13. Internet access required and sold separately. Some apps may require purchase.
14. Based on internal testing vs. previous generation product with 802.11ac wireless LAN module.
15. Multiple-Input Multiple-Output (MIMO) is a wireless technology that uses multiple transmitters and receivers to enhance data transfer. MIMO requires a MU-MIMO router, sold separately.
16. EMEA Use Restrictions: DO NOT USE the superlative claim in the following countries: Romania, Slovakia, Turkey, UAE, Russia, CIS countries (Armenia, Belarus, Kazakhstan, Kyrgyzstan, Moldova, Russia, Tajikistan, Turkmenistan, Ukraine, and Uzbekistan), Indonesia, Vietnam, Malaysia; APJ Use Restrictions: China, Vietnam, Indonesia, Malaysia – DO NOT use; LAR Use Restrictions: Brazil, Mexico – Do NOT use.
17. For customers located in the United States and Canada, visit this link to find out more about our self-maintainer program: [https://h20345.www2.hp.com/csnmcsdocs/marcom/m/cpn\\_cms/SMext1.htm](https://h20345.www2.hp.com/csnmcsdocs/marcom/m/cpn_cms/SMext1.htm). For customers in Latin America, EMEA and Asia Pacific, please work directly with your sales account representative to understand what self-repair program options may be available for you.

© 2012 Google Inc. Google, Chrome™ browser, Chrome OS™ operating system, Chromebook™ notebook computer, Chromebox™ computing device, Gmail™ webmail service, Google Calendar™, Google Docs™, Google Maps™, Google Play™ store, Google Drive™, and the Google Logo are registered trademarks of Google Inc. Intel®, Celeron®, Intel® Core® and Intel logo are trademarks of Intel Corporation or its subsidiaries in the U.S. and other countries. SD, SDHC, SDXC, microSD are trademarks or registered trademarks of SD-3C in the United States, other countries or both. Bluetooth is a trademark of its proprietor used by HP Inc. under license. USB Type-C™ and USB-C are trademarks of USB Implementers Forum.

